



BUFFET GROUP
WIND INSTRUMENTS



NEW PRODUCTS

Musikmesse Frankfurt 2013



Antoine Courtois
Paris





PROFESSIONAL SAXOPHONE

Senzo

SENZO



Senzo announces the rebirth of Buffet Crampon's professional saxophones.

Senzo, which means ancestor in Japanese, combines Buffet Crampon's tradition of musical excellence with a sensual and modern approach.

Inspired by the legendary Super Dynaction and S1 models, this new saxophone retains the brand's distinctive round, sensual and emotional sound with major improvements.

This instrument is unique in its ability to provide ease of play in executing the most complex intervals and is free-blowing in every register. Even the most demanding saxophone players will find the lower register surprisingly easy. From velvety low to impressively bright high notes, this model's sound range is infinite, allowing the player to express the most varied of musical styles.

Intonation was a particular focus in the quest for perfection and internal volumes were reviewed in order to provide an extended and enhanced range of tuned sound (438-444Hz). Special attention has been given to the neck's bore to increase the flexibility of play throughout the saxophone's register. An optional bore with increased projection and a lighter timbre is also available along with a silver or gold finish. A magnificent hand-made floral engraving brings out the pure copper used in manufacturing the instrument's body.

Senzo, destined to be the new standard in professional alto saxophones, is an essential step towards the renewal of Buffet Crampon saxophones. It faithfully reflects the combination of French musical instrument making know-how with state of the art technology to meet today's musical demands.

Senzo necks

Two acoustic options make Senzo adaptable to the specific demands of different musicians. These two necks have an amplified resonance cavity, which allows a greater projection and a clear and brilliant tone. They are available with a silver-plated and a gold-plated finish.

- silver-plated neck and gold-plated octave key
- gold-plated neck and octave key



STUDENT BASS CLARINET

BC1180



Buffet Crampon returns with the new BC1180 student bass clarinet

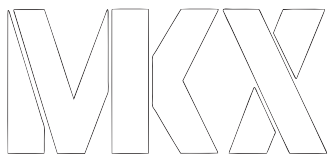
Entirely relooked to offer young students and amateur players an instrument providing thrilling sensations in the lowest notes which are the pillars of harmony, the BC 1180 is sure to suit every musical style.

This clarinet facilitates the jump between intervals without risk thanks to its new and re-conceptualized simplified register key system. Its wide, homogeneous sound palette and extremely fluid Legato allow the musician to experiment with every acoustic or technical idea imaginable.

As the only student bass clarinet made from selected and treated grenadilla wood from Mozambique, delivered in a compact, lightweight case, the new Buffet Crampon 1180 stands out from all others thanks to the quality of its manufacture, its remarkable intonation, timbre and overall comfort. It sets itself as the global standard for student bass clarinets.



PROFESSIONAL MKX SAXOPHONE



The Julius Keilwerth MKX Series marks the next evolution of the saxophone for this historic brand. By combining tonal characteristics of the legendary SX90R along with physical characteristics reminiscent of vintage saxophones, the MKX Series allows the player to have the best of both worlds; a modern sound with a vintage feel.

The name MKX was chosen to pay tribute to those who have contributed to or inspired the development of this new line. The letters "MK" represent Markneukirchen, the historic town in the same region of eastern Germany where the Julius Keilwerth brand began in 1925. Boasting a long history of musical instrument makers and manufacturers, Markneukirchen is now home to the factory and skilled workers who carry on the traditions of their forefathers, and whose craftsmanship is essential to the quality of this instrument.

In honoring the kinship to the legendary Julius Keilwerth SX90R Series, the letter "X" reminds us of the influence and inspiration from those who paved the way for our success. While the MKX and SX90R series do share some characteristics, they can be likened to cousins who share a common blood line, but have individual qualities and personalities that allow them a unique voice of their own.

The Julius Keilwerth MKX Series is a professional level saxophone that will offer German quality engineering and manufacturing at prices competitive to the global scale, and allow a new generation of musicians to use Keilwerth Saxophones in bringing their voice to the world stage.

SOPRANO SX90



The SX90 soprano series

The SX90 Series combines the legendary manufacturing of the Keilwerth brand along with the influence legendary keilwerth artist David Liebman. All models are based on innovative new bore and bell design that offers less resistance with a centered tone and even pitch throughout the range of the instrument. All keywork is produced entirely by hand to ensure the most accurate mechanism and precision.

They are available in gold lacquer, black nickel or Vintage.



SX90DL

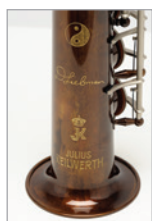
The SX90DL model expands the collaboration with Dave Liebman even further with new ergonomically shaped key work specifically on the side and auxiliary keys for easier access and facility.

Synthetic corks are used on all regulation points to resist wear and help maintain regulation consistency.

SX90DLS

The SX90DLS model is for those who appreciate the instrument presented exactly as used by the artist who has inspired it. Additional features include cork pads on all upper keys, including palm and register keys. The thumb rest is padded for added comfort during extended performance. All engraving is done by hand and has been designed by Dave Liebman including a hand engraved D.Liebman Signature on the bell.

Accessories selected by the artist to accompany this model include swab, saxophone stand, and key clamps. This instrument is presented in an exclusive Signature Series case.





F-TUBA

56AFT

B&S F-Tuba model range extension

Developed with the help of Alessandro Fossi, this new 6 rotary valve B&S F-Tuba sets a new standard in combining the well-known B&S F-Tuba qualities such as excellent intonation, easy blowing and superior response with an effortless low register and a large singing high definition sound.

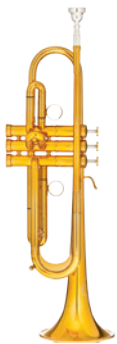


CC-TUBA

MRP-C

B&S CC-Tuba range extension

Featuring a larger bell and an enormously wide bottom bow, the new B&S MRP-C CC-Tuba is rounding up the B&S CC-Tuba line with a larger 5+¹/₄ model with 5 rotary valves. The sound is like on German BBb-Tubas, but it plays with the ease of a CC-Tuba. Co-Designer Dan Perantoni (Mr. P): "The MRP-C really produces that great German rotary sound that I had in mind."



TRUMPET

MBX2

Taking the established MBX to the next level

Following the already established MBX, B&S is now presenting a new and upgraded MBX2, again co-designed with Christian Martinez. This model is equipped with a newly designed leadpipe for even more reliability, precise attack that also prevents overblowing. A new tuning slide design with acoustic wing adds flexibility. Top and bottom caps and finger buttons have a unique styling while the included additional set of heavy bottom caps offers a more compact sound and timbre. For more comfort, a closed ergonomic thumb ring was made.



FRENCH HORN

K10

Hans Hoyer – the next generation

The new K10 F/Bb-Double horn is the newest innovation for the orchestra:

It was designed in close cooperation with Markus Wittgens. A well-orchestrated middle range, a great low register and an unknown ease in the higher area is obtained with a light rotary valve set, a full flow switch valve and an individually adjustable mouthpiece receiver. A pleasant well-balanced set-up, supported by both a fully adjustable fingerhook and thumb lever plus flipper guarantees perfect ergonomics.

Every K10 has a detachable bell and is delivered in an original MB case.





BE1139 OVAL TENOR HORN

The entry level oval shaped German Tenorhorn in Bb

Developed using an established Melton design from Germany, the new BE1139 is the perfect entry into the world of traditional "Blasmusik" at an affordable price. This instrument features 3 reliable rotary valves, full nickel silver slides and capping protection and is ready to go – including lyre holder and strap holder for marching as well.

Available from August 2013

Antoine Courtois
Paris

AC260BO & AC280BO ADVANCED TENOR TROMBONES

The new tenor trombones

Developed using the Antoine Courtois design, the two new AC260BO and AC280BO models provide trombonists with consistent quality at a more affordable price.

The two trombones share the same bell yet come with two bore-slide options:

- a medium bore and a narrow slide for the AC260BO model
- a large bore and a standard slide for the AC280BO model

AC402TRR XTREME TROMBONES

New in the XTREME family.

This medium bore .508" straight trombone, has the same elegant playing characteristics as the .500" smaller model of the same range, but is slightly more open and gives you a great flexibility, with enough power to keep up with any band.



ACCESSORIES

SOUND DESIGN

ICON BARRELS



The ICON barrel has been designed to fit all Bb or A clarinet models, whatever their bore or their origin. The elegance of the body and the finely worked rings give this new barrel a distinctive style. The bore and the silhouette are the culmination of the latest acoustical research carried out Buffet Crampon on its family of clarinets. Responsiveness, sound projection and definition of articulation are greatly facilitated by the new ICON barrel, contributing to the player's comfort.

LIGATURE HARMONY FOR CLARINET



In metal with two screws, two plots on the pre-formed of the Reed, fine surface treatment, finishing black nickel.

F12240: Ligature Harmonie black nickel

F12250: Mouthpiece cap black nickel

RESONANCE BELL FOR FRENCH BASSOON



The new Resonance Bell for the French bassoon has been designed as an alternative to the traditional bell.

Its large bore and sturdy wall thickness allow for great power and a homogenous sound throughout the instrument, as well as a pleasant flexibility of the bottom notes. Our bassoon is now available with either bell version; the bell may also be ordered on its own.

CARE COLLECTION

HIGH TECH CASES



Thermoformed shells very protective – black fine leather and aluminium .

BCA821D: for one clarinet

BCA822D: for two clarinets

BCA7100: for oboe

SELECT COLLECTION

CASE COVER



Wallet / Case cover made in Paris by a French creator François Renier for Buffet Crampon.

Choice of colours, and handles – Modern and resistant material, which acquires a patina with age like fine leather. Stitching: "Couture" finishing. One large inside pocket and two pockets outside.

Convenient size for music scores and laptop or digital tablet.