

THESE LUXURIOUS CASES ARE SPECIALLY DESIGNED
FOR MAZZEO MODEL CLARINETS



The cases shown are, left to right, 4967M, 4965M, and 5015. The first is for matched sets of Mazzeco clarinets, and like the second is covered in pin grain black vinyl, with leather binding. The case at right is made of molded Royalite,® a virtually indestructible synthetic, and has an aluminum valance and finger button closure. See instrument listings for numbers of cases standard with each model.

WHITNEY'S
for all School Music Needs
150 PINE STREET
SALT LAKE CITY

H & A SELMER INC.
ELKHART, INDIANA

Printed in U.S.A.

The
Clarinet
of
To-morrow



Play
it to-day

- improve your tonal balance, embouchure, technique
- help beginners learn better and faster
- make clarinet teaching easier



ROSARIO MAZZEO

*Boston Symphony Orchestra
New England Conservatory of Music
Berkshire Music Centre*

For those who dare to break with tradition, Selmer presents the Mazzeco system clarinet.

Each change in this remarkable new instrument solves a major shortcoming of the Boehm system, while remaining altogether compatible with it technically. Because he is himself an active professional, for 26 years a member of the Boston Symphony Orchestra's clarinet section, Mr. Mazzeo has taken care to make each change practical and easy to adjust to, even for the musician long accustomed to nothing but the standard Boehm system instrument.

For more than three years, intensive tests in actual symphonic playing have been proving that the Mazzeco system can lift clarinet performance to a new level of facility and tonal excellence, almost overnight.

Your Selmer dealer will be glad to have you prove this to yourself. Ask him to arrange a trial of a Selmer Mazzeco system clarinet, without cost or obligation to you. Six models are available, created especially for the professional, the teacher, or the student.

Copyright 1959, H. & A. Selmer Inc., Elkhart, Indiana

THE PLAIN MODEL —
solves these common throat B \flat problems

On Boehm clarinets the register vent is too large for the best upper register performance, too small to produce a rounded throat B \flat . But this B \flat creates problems far greater than its tone quality.

The awkward finger movements required by the throat B \flat work against a consistently good hand position and steady grip on the instrument. Movement of the instrument, in turn, works against the development of a firm embouchure. Above all, scales, arpeggios, and trills that include the throat B \flat are usually difficult to play, nearly impossible to play really well.

Mazzeo system clarinets simply eliminate these problems. Literally hundreds of fingerings are available for the third line B \flat —all using a full-toned, properly tuned side hole. On the plain model, this B \flat is played with the A key and any one or combination of left hand second finger ring and right hand first, second, and third finger rings, with or without little finger keys.

The phenomenal improvement in technique this feature effects is secondary to the superb tonal balance between the throat register and the rest of the instrument. This balance, the beautifully smooth transition from lower to upper register, and superior tone quality, are all achieved for you, without embouchure changes to favor tone quality and tuning in the throat register.

The first seven musical examples are difficult on the Boehm system, relatively simple and far better sounding on the Mazzeo system. In many passages fingers that must be down for tones before or after the throat B \flat may be left down for the B \flat —a substantial aid to your facility.

The Plain Model Solves Throat A Problems

While the second space A retains its standard fingering, many other combinations are also available on the Mazzeo system clarinets. In fast passages, for example, you can produce an A with the same ring combinations used for the B \flat , less the A key for the left hand first finger. Here again technique is improved by using some of the fingers that must be down for tones immediately preceding or following the throat A. Examples 8 and 9 illustrate passages that are much simplified by these A fingerings.

The Plain Model Improves Throat F \sharp , G, G \sharp , A

All Mazzeo system clarinets have a plateau key instead of the usual ring for the left hand thumb or F key. The tones shown in example 10 are now better matched to tones directly above or below them. The covered hole eliminates the fuzzy tone caused by the failure of the thumb to cover the entire ring at once. Trills made with this key, as in example 11, are more precise, and pianissimo passages like example 12 can be played with greater security.

The Mazzeo Bell

Strictly functional in appearance, the Mazzeo bell improves the balance of the instrument, making it easier for beginners to hold, and improves the quality of right hand tones.

THE MODIFIED MODEL — offers four additional features

The throat B \flat can be produced with the A key plus any combination of ring keys except first finger left hand, and with any or all little finger keys.

A special fork E \flat -B \flat mechanism lets you play from low D \flat to E \flat or upper register A \flat to B \flat merely by lifting the second finger of the left hand. This smooths out several intervals that are usually awkward to finger and unbalanced in tone. See example 13.

The G \sharp (D \flat -A \flat) key may be operated by the right or the special left hand A \flat -E \flat levers. These interconnected keys make it possible for the first time to play a passage like example 14 with real facility.

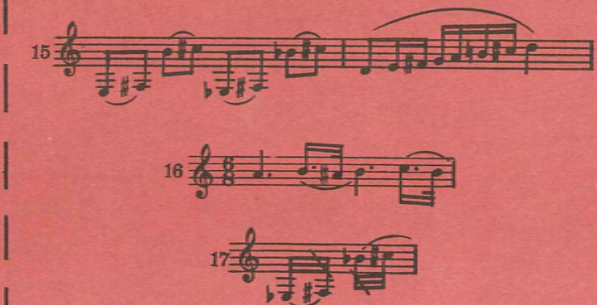
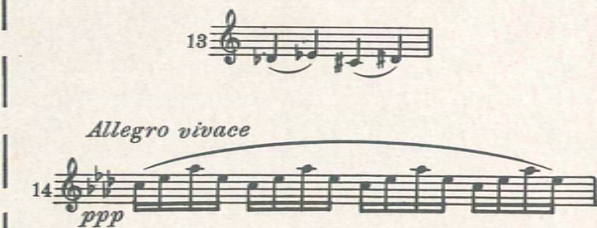
The articulation of E-F \sharp (B-C \sharp) makes a D major scale as easy to play as a C major scale. Moreover, passages of the type illustrated in example 15 may be played easily and with precise tuning.

PERSONAL MODEL — Mr. Mazzeo's own clarinet

To all of the features of the plain and modified models, the personal model adds the following:

Low E \flat may be played with the right or left hand little finger. This added left hand lever (the only new key on any Mazzeo system clarinet) simplifies and improves the performance of upper register passages that descend momentarily to the third line B \flat , as in example 16.

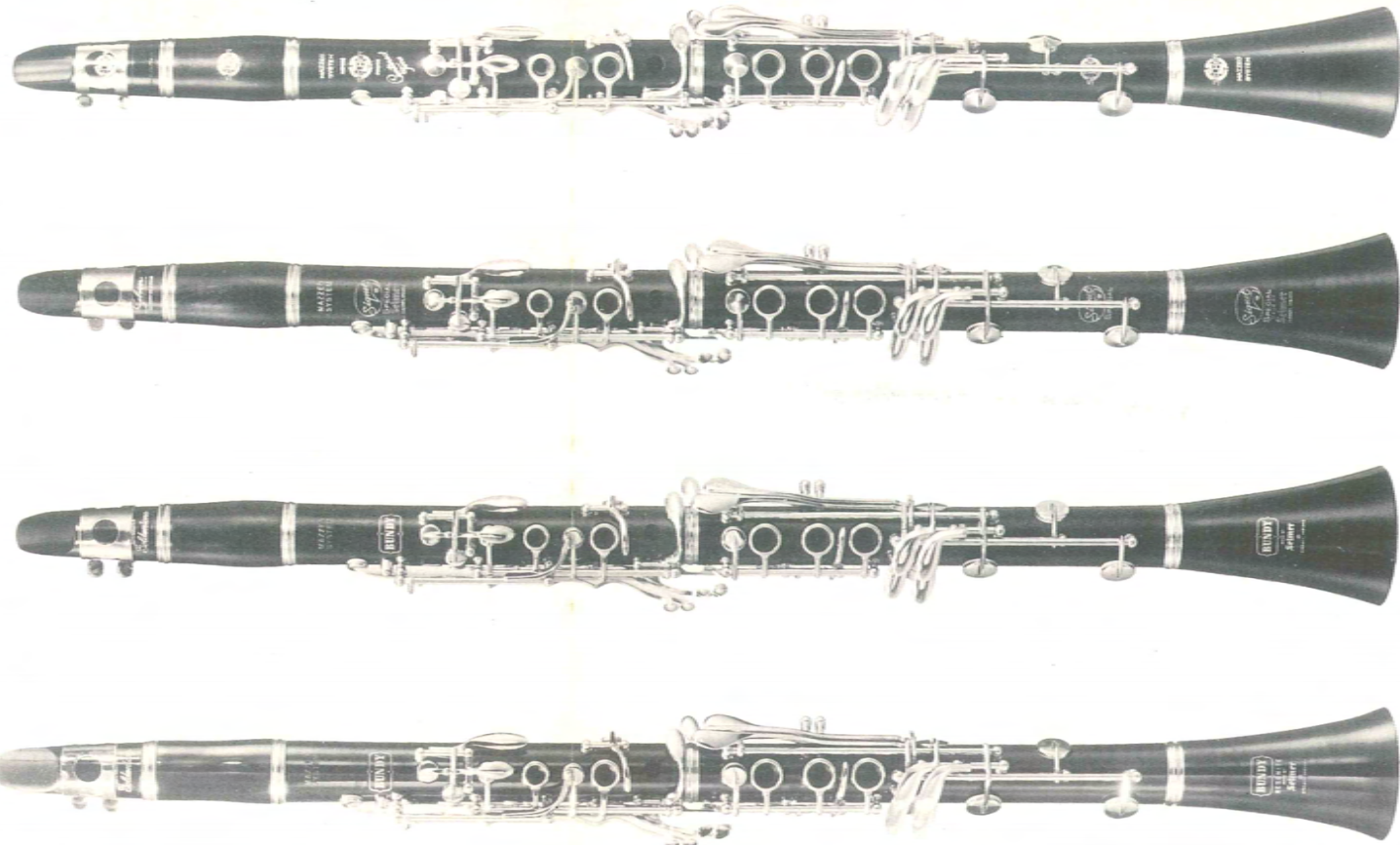
The articulation of E \flat -F \sharp (B \flat -C \sharp) permits facile and well tuned trills like example 17.



Examples from Manual of Mazzeo System Clarinet
© Henri Elkan, Philadelphia

Selmer

Presents the new
MAZZEO MODEL CLARINETS



PLAIN MODEL

Select one of these B \flat clarinets if you now play the plain Boehm model, with 17 keys and 6 rings. Plain Mazzeo system clarinets have 17 keys and 5 rings, with covered left hand thumb key, and the Mazzeo throat B \flat mechanism, operated by any ring key except first finger, left hand.

- 15M—Selmer B \flat Mazzeo System Clarinet, with No. 4965M case, \$422
- 15M—Matched set, in B \flat and A, with No. 4967M case, \$751
- 110M—Signet special B \flat Mazzeo System Clarinet, with No. 4965M case, \$232.50
- 1310M—Bundy B \flat Mazzeo System Clarinet, with No. 5015 case, \$204.
- 1400M—Bundy Resonite B \flat Mazzeo System Clarinet, with No. 5015 case, \$159.50

MODIFIED MODEL

Select this instrument if you want the key improvements of the full Boehm system without the low E \flat . The modified Mazzeo system clarinet has 19 keys and 6 rings, with covered left hand thumb key, Mazzeo throat B \flat mechanism, articulated C \sharp /G \sharp , special fork E \flat -B \flat , articulated F \sharp -C \sharp , left hand E \flat -A \flat lever, A \flat -E \flat /D \flat -A \flat connection. Silver plated keys only.

- 20MB—Selmer B \flat Mazzeo System Clarinet, with No. 4965M case, \$642
- 20MB—Matched set, in B \flat and A, with No. 4967M case, \$1147

PERSONAL MODEL

This is the instrument used by Mr. Mazzeo, with all features of the full Boehm clarinet and the Mazzeo system mechanism. The personal model has 21 keys and 6 rings, with covered left thumb key, Mazzeo throat B \flat mechanism, articulated C \sharp /G \sharp , special fork E \flat -B \flat , articulated F \sharp -C \sharp , left hand E \flat -A \flat lever, A \flat -E \flat /D \flat -A \flat connection, low E \flat with right and left hand levers. Silver plated keys only.

- 21M—Selmer B \flat Mazzeo System Clarinet, with No. 4965M case, \$672
- 21M—Matched set in B \flat and A, with No. 4967M case, \$1201

All prices include case and federal tax.