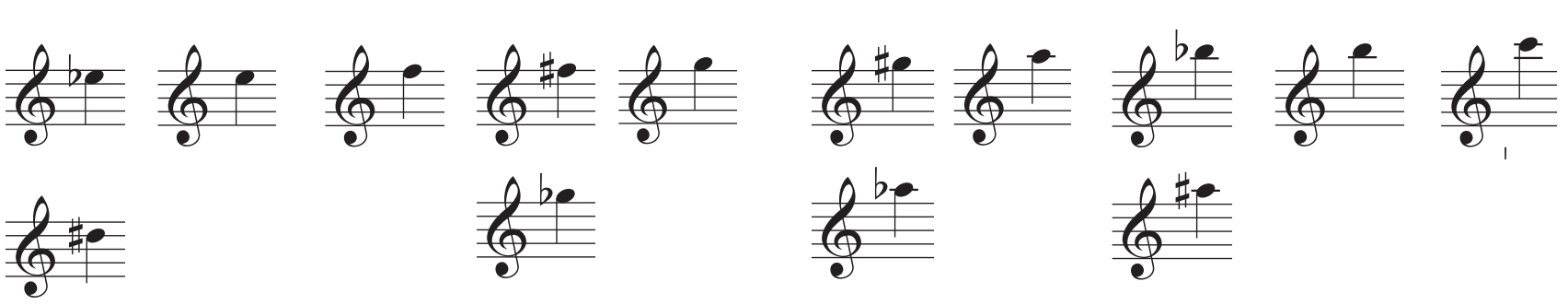
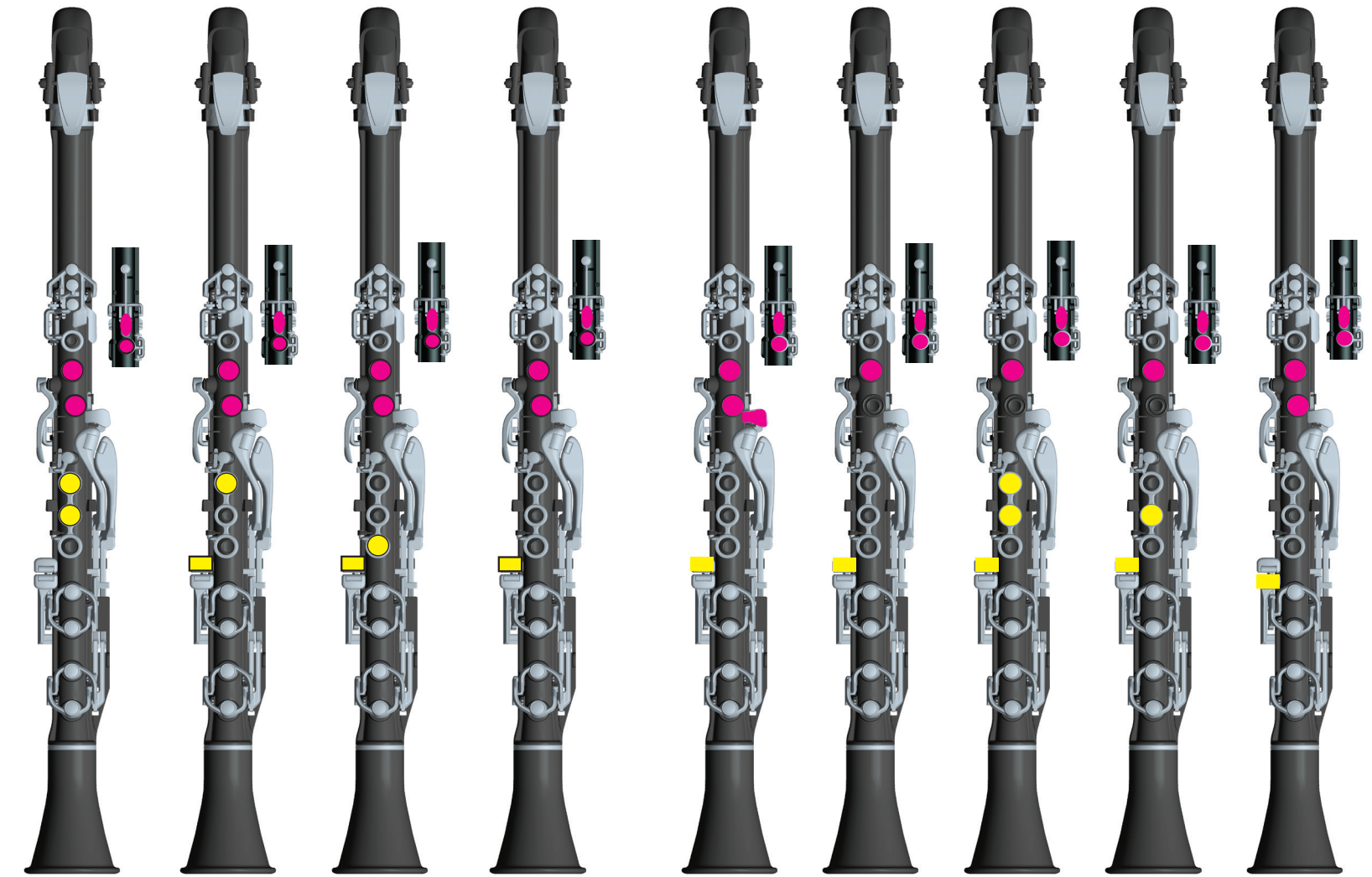


E flat or D# E F F# or G flat G G# or A flat A B flat or A# B C



THE HIGH REGISTER



D flat D E flat E F F# G G# A



CLARINÉO
FINGERING
CHART

LEFT HAND
●
●
●

RIGHT HAND
●
●
●

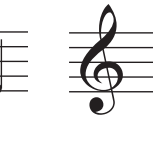
THE LOW REGISTER



The first measure of the song 'The Wind' is shown on a five-line musical staff. It begins with a treble clef. The first note is a half note on the second line (D4). This is followed by a quarter rest. The final note in the measure is a quarter note on the first space (F4).



Two musical staves are shown. The top staff has a treble clef and a flat key signature (Bb). The bottom staff has a treble clef and a sharp key signature (B).



The first two notes of the scale are B-flat and C. The B-flat note is on the second line of the staff, and the C note is on the second space. Both notes are quarter notes.



THE MIDDLE REGISTER

